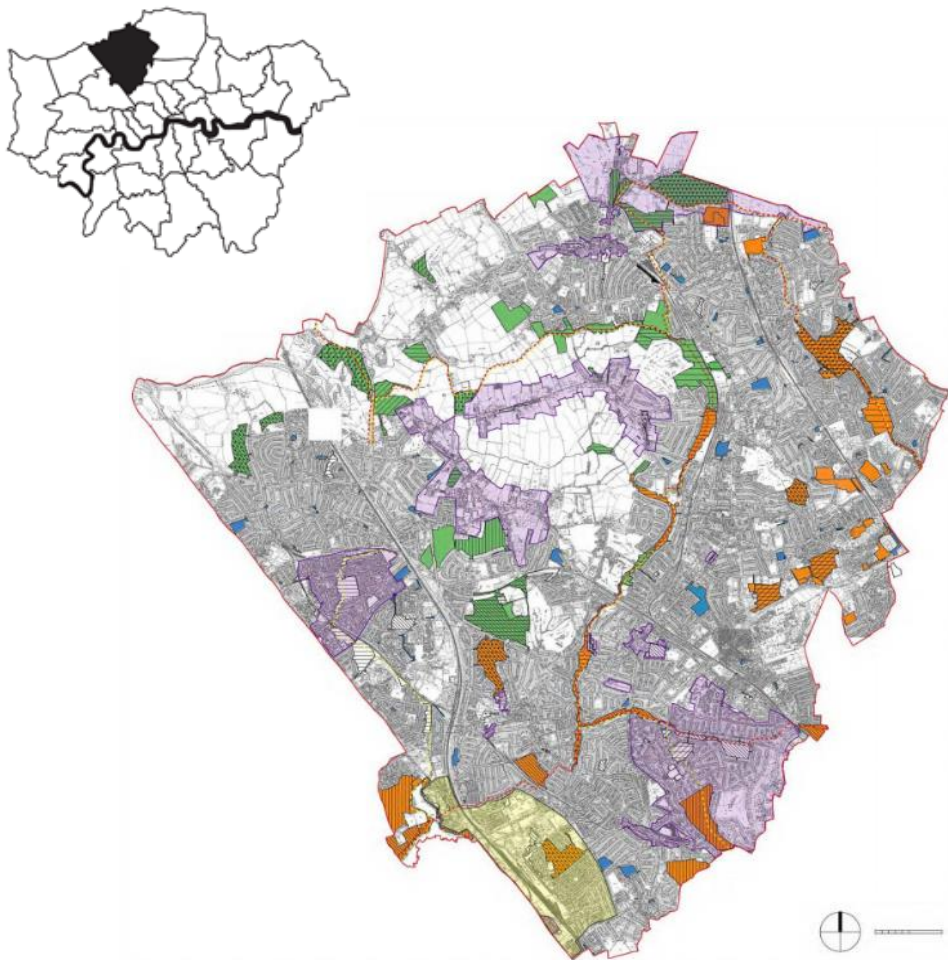


LOCAL - LONDON BOROUGH OF BARNET CNCA

- A suburban borough in North London
- 890 ha of open space provision (approx. 10% of area)



- Recreation (£41m/yr welfare value)
- Physical health (£19m/yr avoided costs)
- *Property premium*
- Climate regulation

Barnet Parks Balance Sheet, 2016

	Total Value PV (£m)
Natural Capital Assets	
Asset Value	1,944
Gross Asset Value	1,944
Liabilities	
Maintenance Costs	(134)
Net Asset Value	1,810

PV= present value of future benefits in perpetuity discounted to 2016 prices
 Asset Value is PV of all future benefits
 Liability is PV of all future maintenance expenses

CITY - GREATER MANCHESTER, UK

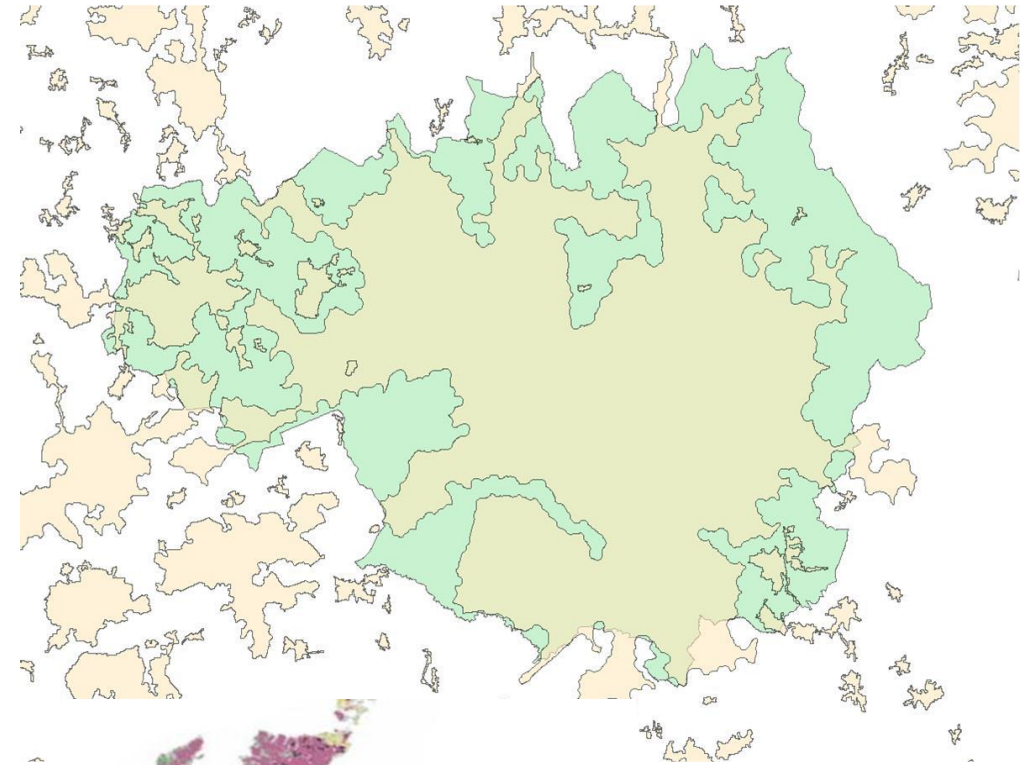
Values benefits from urban natural capital:

- Noise regulation
- Global and local climate regulation
- Physical health from outdoor recreation

	Monetary Flow	Asset Stock Value (PV, 100 years, 3.5% D.R.)
Avoided direct and indirect costs to Society	£38m p.a.	£1.9bn
Welfare gain (base on QALYs)	£63m p.a.	£1.1bn

Source:

<http://randd.defra.gov.uk/Default.aspx?Menu=Menu&Module=More&Location=None&Completed=0&ProjectID=19843>



- Urban extent polygons
- Boundary of GMCA