

*There will be 250
miles of cable and
each mast is to be
250 feet high.*

GAUMONT GRAPHIC

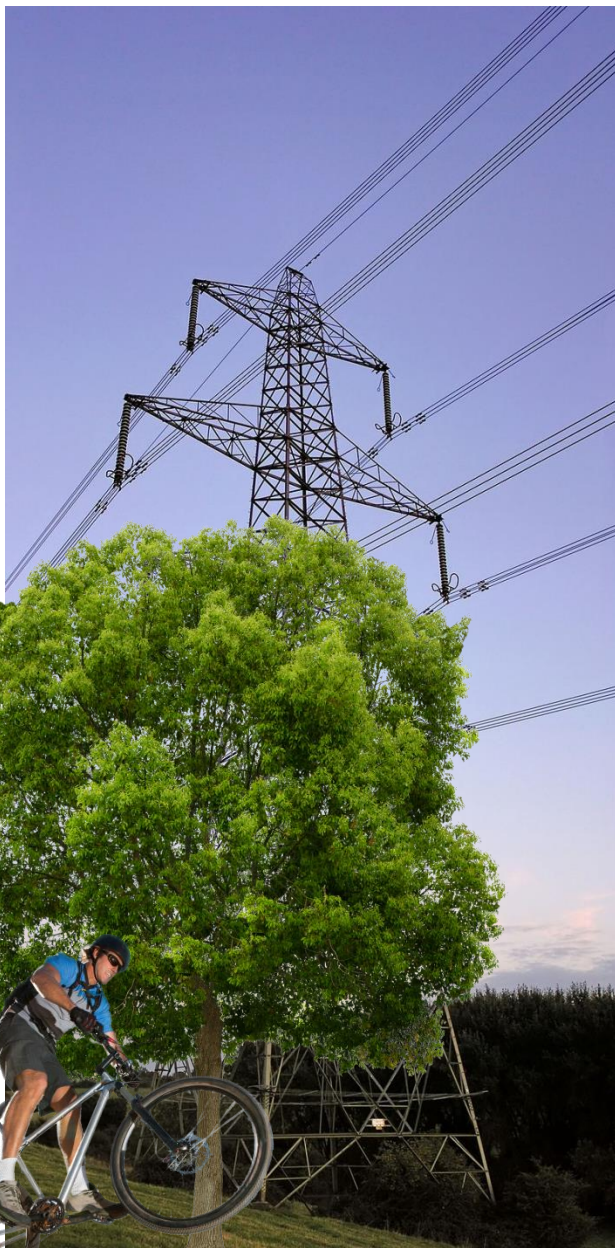




4000km of overhead line
320 km of underground cables.
132 substations

40,000km of overhead lines
65,000km of underground cables.
30,000 substations





Financial Capital

Cost to the consumer

Natural Capital

Habitat creation

Social Capital

Green Network



