

Natalia Lutti Hummel

TeSE Lead, Getulio Vargas Foundation (FGV)

An initiative of: **FGV EAESP**
CENTRO DE ESTUDOS
EM SUSTENTABILIDADE

In partnership with:



TeSE

INICIATIVA GVCES

Natalia Lutti Hummel

equipe.tese@fgv.br
www.fgv.br/ces/tese



TeSE

INICIATIVA GVCES

MISSION

Engage the business sector to build strategies and tools that contribute to an increasingly sustainable management of its dependencies and externalities related to ecosystem services.

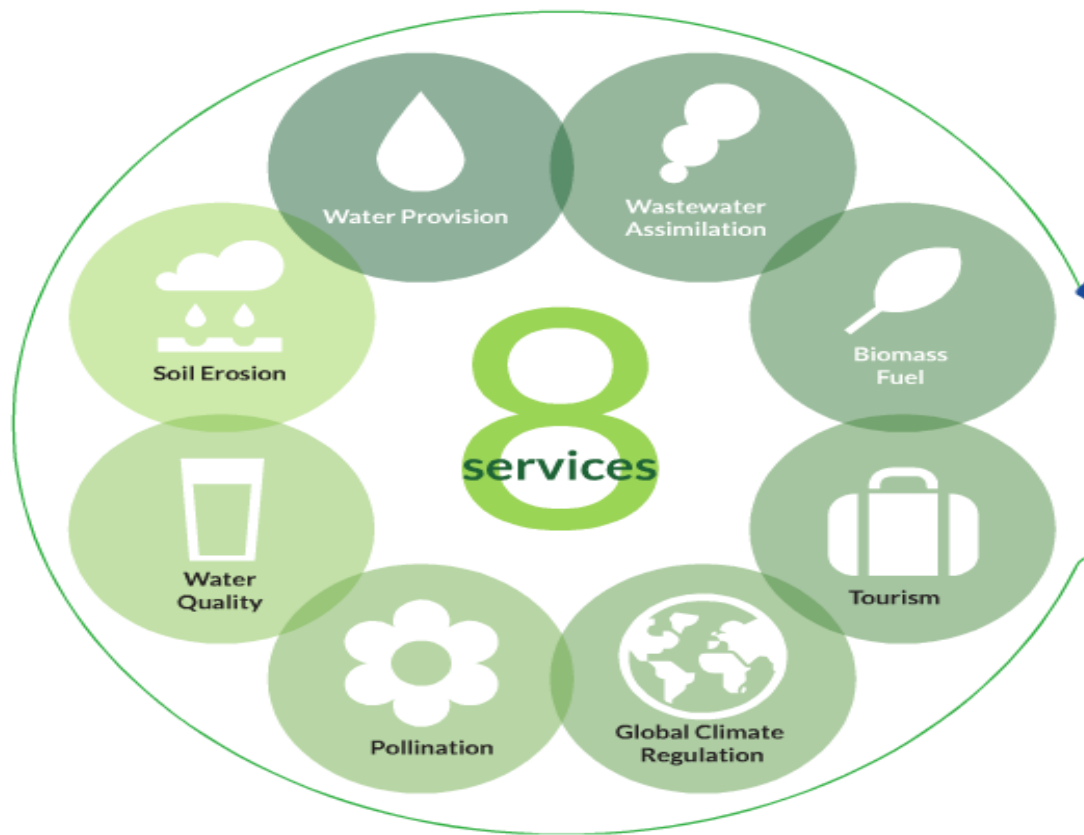
TWO FOCUSES

Measurement

Corporate Guidelines
for the Economic
Valuation of Ecosystem
Services (**DEVESE**)

Reporting

Corporate Guidelines
for the Reporting of
Environmental
Externalities (**DEREA**)



business
dependance

impact to
business

externality



Organizational focus: site or project



Approach: prospective or retroactive



Globally applicable. Secondary data for Brazil



Publicly available

Excel ribbon: Home, Layout, Tables, Charts, SmartArt, Formulas, Data, Review. Font: Myriad Pro, 11. Alignment: abc, Wrap Text. Number: Number. Format: Normal, Bad, Good, Neutral. Conditional Formatting. Insert, Delete.

J20 fx 2000000

WATER PROVISION

Instructions
 Once calculation is run, please write down the results in the COMPILATION OF THE RESULTS section, below.
 In order to run new calculations, you must delete data that was previously entered.



INPUT DATA

Variables	Value	Unit	Notes
Dependency			
QW_u = Quantity of water currently used	100,000	m ³	
QW_{un} = Quantity of water demanded, but currently unavailable	20,000.00	m ³	
QW_d = Quantity of water demanded	120,000	m ³	
QP_{max} = Maximum quantity produced	1,200,000.00	m3	
Impact			
QW_{un} = Quantity of water demanded, but currently unavailable	20,000.00	m ³	
Externality			
QW_{col} = Quantity of water collected	100,000.00	m ³	
QW_{ret} = Quantity of water returned to the same body of water where it was collected	80,000.00	m ³	
Valuation			
$\$pw_{imp}$ = Price of imported water (from another watershed)	0.12	BRL/m ³	
$\$log_w$ = Cost of logistics to import water	2,000,000.00	BRL	

QUANTIFICATION AND VALUATION

Dependency	Impact	Externality
DQw 0.10 m3 water/m3	Hd 20,000.00 m ³	Hb -20,000.00 m ³
Value 2,014,400.00 BRL	Value 2,002,400.00 BRL	Value -2,002,400.00 BRL

Steps of Natural Capital Protocol

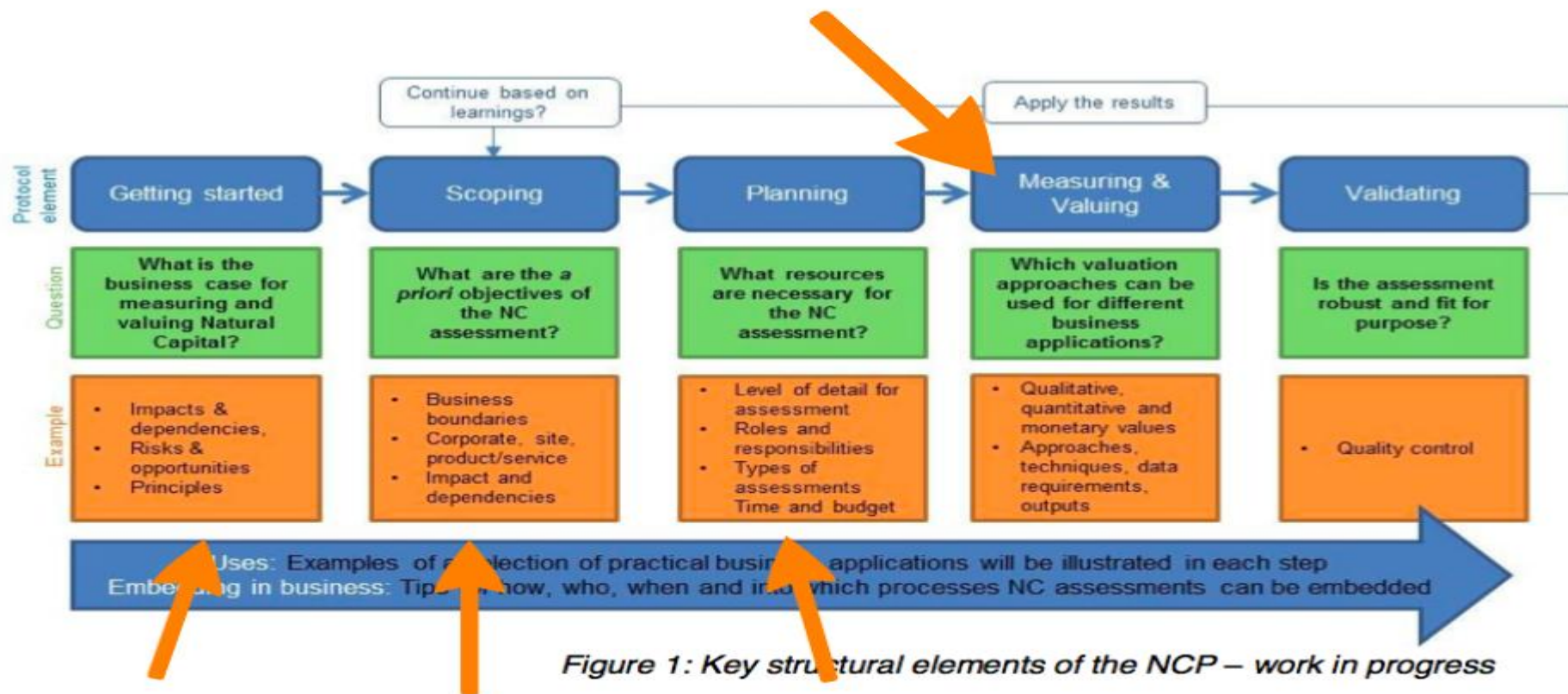


Figure 1: Key structural elements of the NCP – work in progress

How does DEVESE relate to other kind of tools?



Part of a bigger framework



Add to qualitative analysis



Pre-analysis of what ES are relevant



Deeper analysis require other tools



Useful for annual inventories, monitoring



Does not map ecosystem services

An initiative of: **FGV EAESP**
CENTRO DE ESTUDOS
EM SUSTENTABILIDADE

In partnership with:



TeSE

INICIATIVA GVCES

Natalia Lutti Hummel

equipe.tese@fgv.br
www.fgv.br/ces/tese