

Mary Draves

Global Director of Environmental Remediation and Restoration, The DOW
Chemical Company

Jennifer Molnar

Lead Scientist, The Nature Conservancy



Dow and The Nature Conservancy: A Collaboration to Value Nature

Mary Draves, The Dow Chemical Company
Jennifer Molnar, The Nature Conservancy

Goal: Find ways for companies to
incorporate the value of nature
into business decisions.





Improved
Conservation
Outcomes

Improved
Business
Performance

- Improving air quality through reforestation
- Mitigating coastal hazards with natural infrastructure
- Preventing disruption to freshwater supply



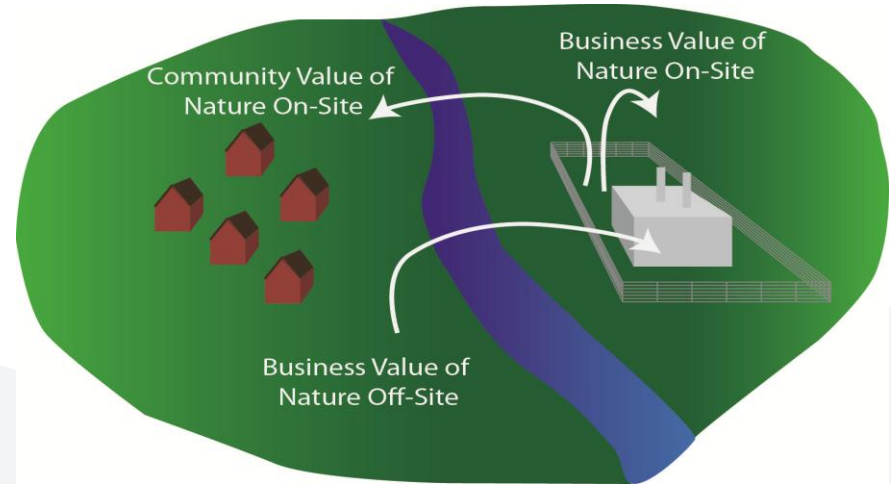
Jennifer Molnar



Jennifer Molnar

- Landscape level application of Brazil's Forest Code
- Prioritization of areas by profitability and ecosystem service performance

- Uses ecological attributes to identify and quantify ecosystem services at a site
- Provides units of measure that engineers can put into their valuation models.





Map functionality

Capture photos of site and
notes to support
assessments

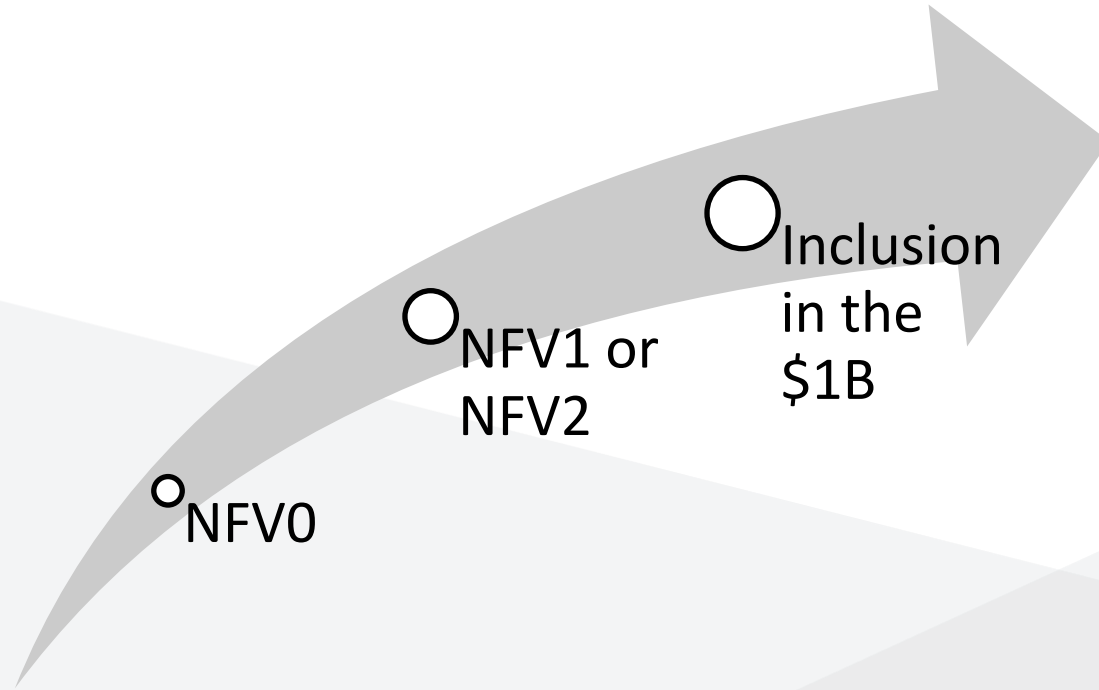
Progress bar

Photo-based questions to
guide users



- Our Goal is to apply a business decision process that values nature. Dow will deliver business value and natural capital value through projects that are good for business and good for ecosystems.
- Natural capital decision-making across a global business of this scale **has never been done before.**
- By 2025, Dow will **deliver \$1B in value through projects that are good for business and good for ecosystems.**
- By 2020, **all R&D, capital and real estate projects at Dow will be screened** using Nature's Future Value (NFV) assessments, a tool we developed with The Nature Conservancy to measure the value of ecosystem services.

NFV – a business process that
will help us find the right projects



Engineered Natural Technologies

- Green or natural infrastructure that provides the same services as grey infrastructure
- Example: Seadrift Wetland

Process Improvements

- Resource efficiency improvements that reduce impact on nature
- Example: Water recycling projects

Property

- Putting land (greenbelt or surplus) into conservation
- Example: Croydon Woods

Innovation

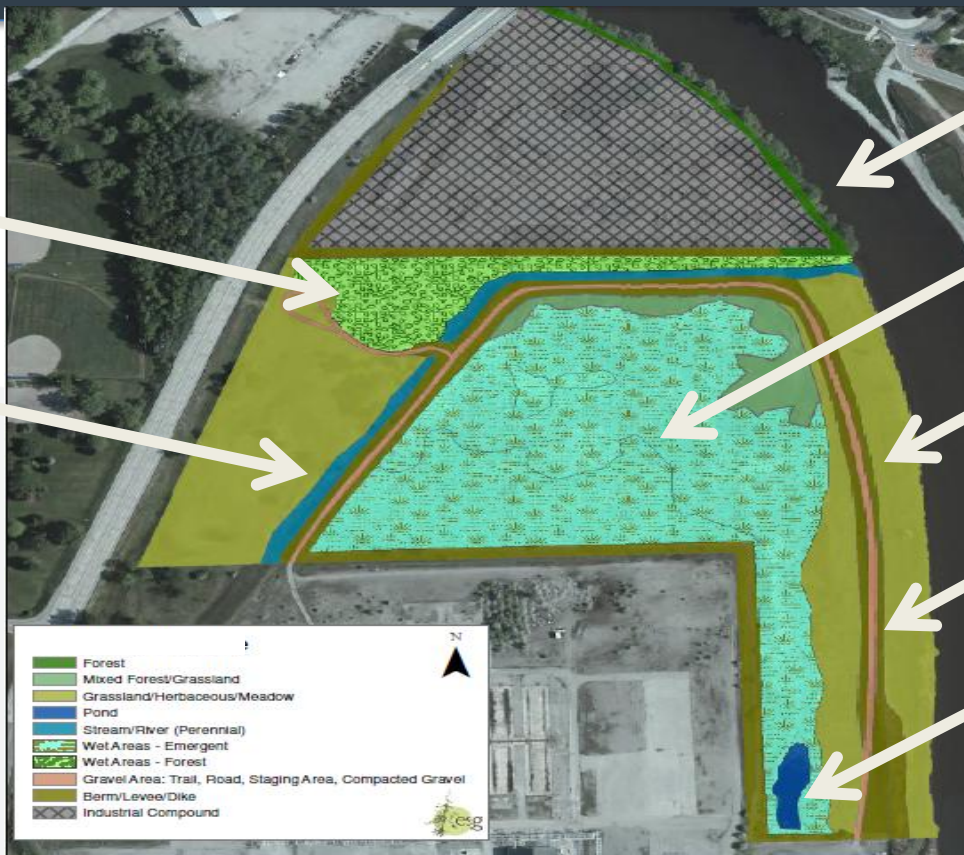
- New products that will enhance nature
- Example: DAS traits that help plants resist drought



- Visited
- To visit

Example: Evaluate Greenbelt Options in MI

Forested
Wetland
Stream



Forest Edge

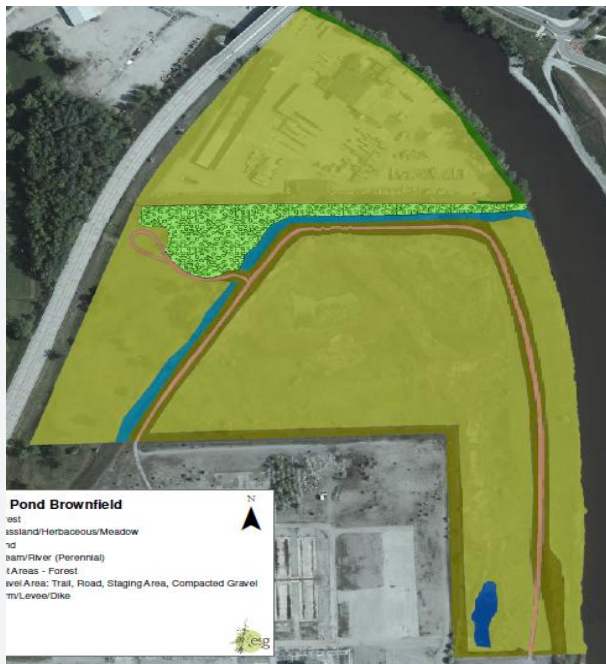
Wetland

Grass

Berm

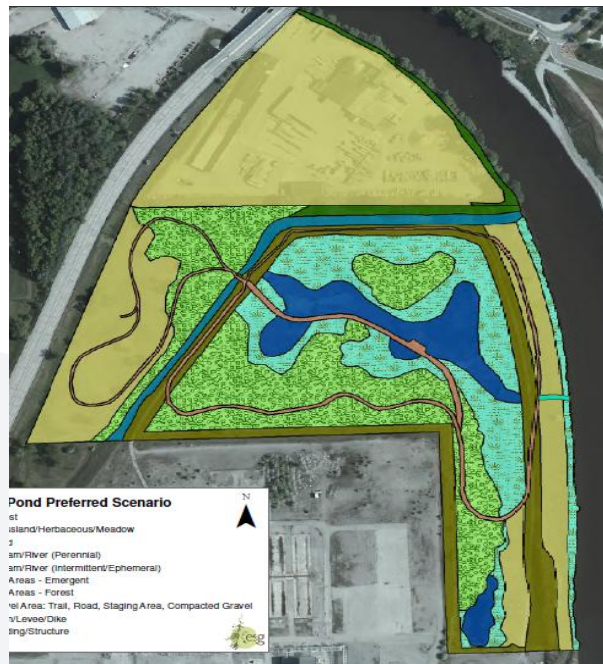
Pond

Scenario 1



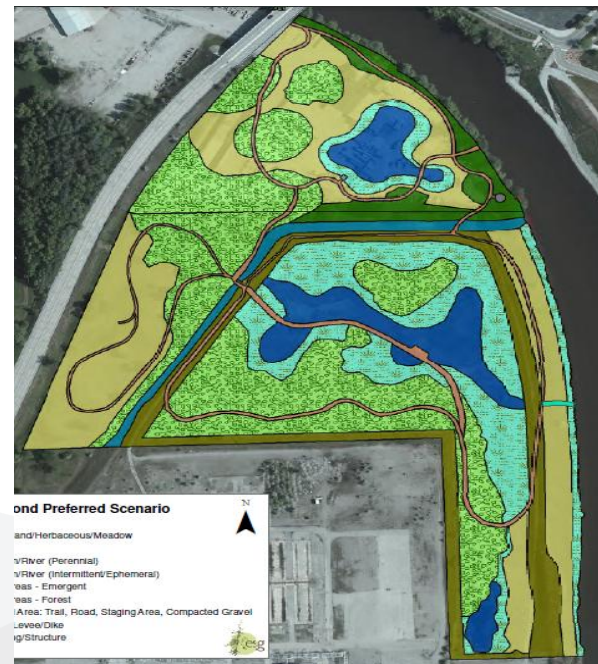
*Less Forest,
Wetland*

Scenario 2



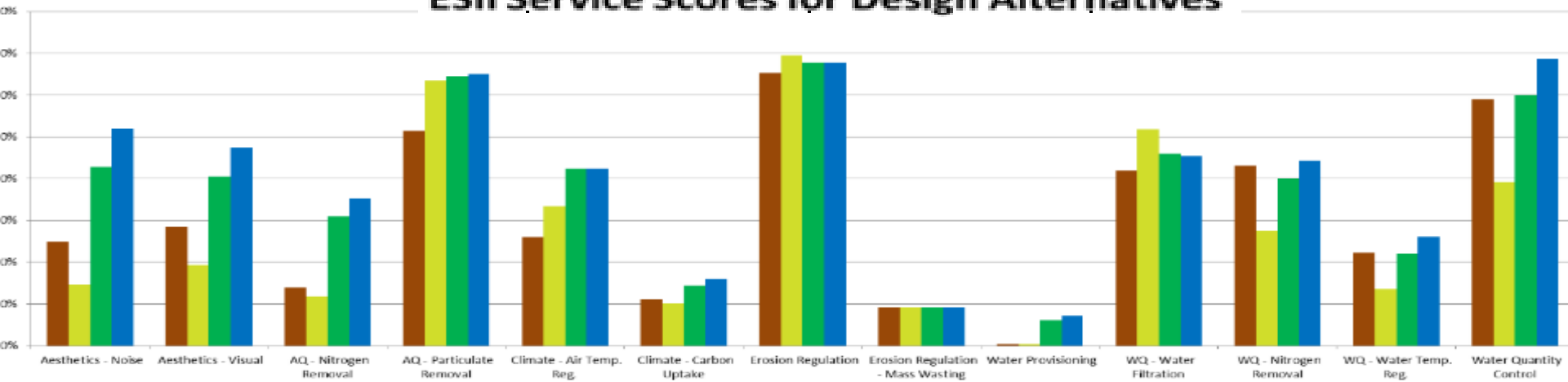
*More Forest,
Wetland, Pond*

Scenario 3



*Most Forest,
Wetland, Pond*

ESII Service Scores for Design Alternatives



Baseline Scenario 1 Scenario 2 Scenario 3

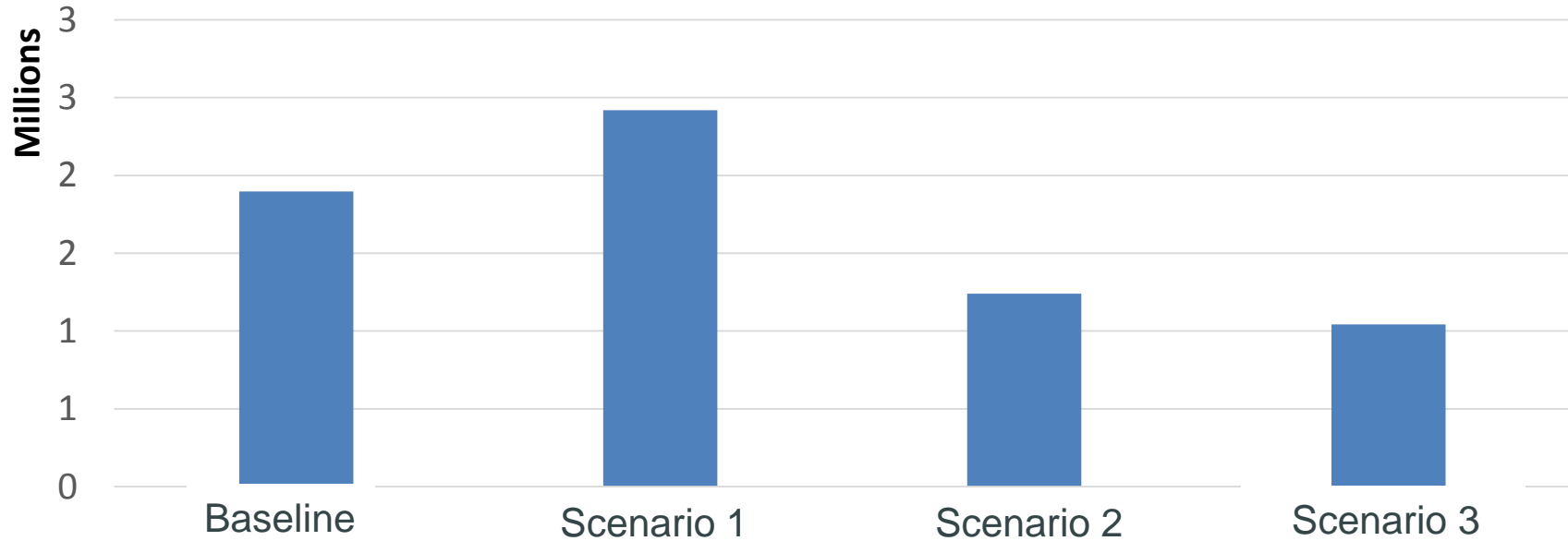
Key Insights

Majority (7 of 13) of services **lower** using business-as-usual design

9 of 13 of services **higher** when just Dow used more ecological design

11 of 13 of services **higher** with full restoration

Water Quantity Runoff (gallons)



The background of the slide is a photograph of a sunset or sunrise over a body of water. The sky is filled with scattered clouds that are illuminated from below, giving them a golden or orange glow. A single bird is captured in flight, silhouetted against the sky, positioned to the right of the main quote. The water in the foreground is dark and calm, reflecting the light from the sky.

“The potential for change
moving forward is
enormous.”

- John Elkington
Co-Founder, Environmental Data Services
SustainAbility, Volans