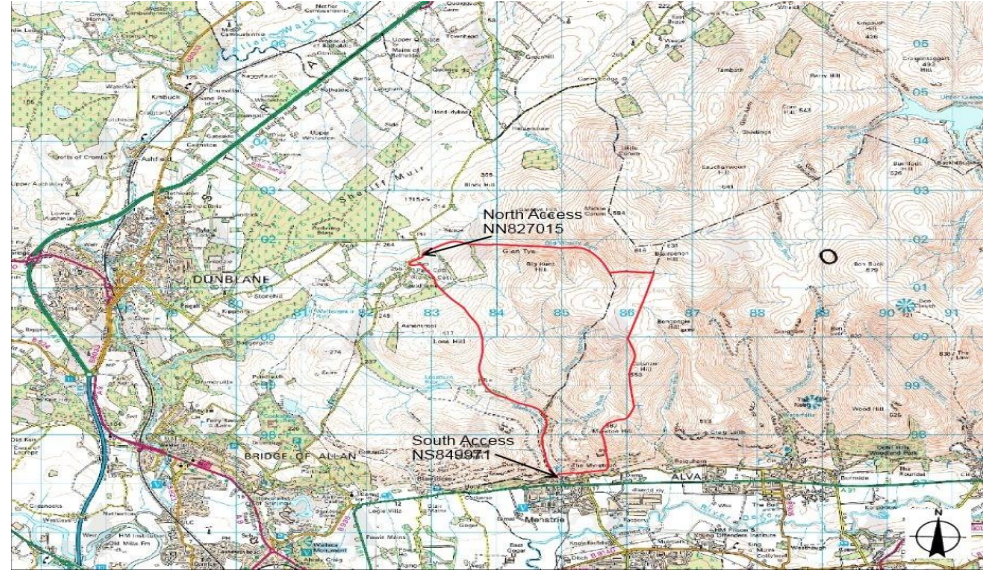


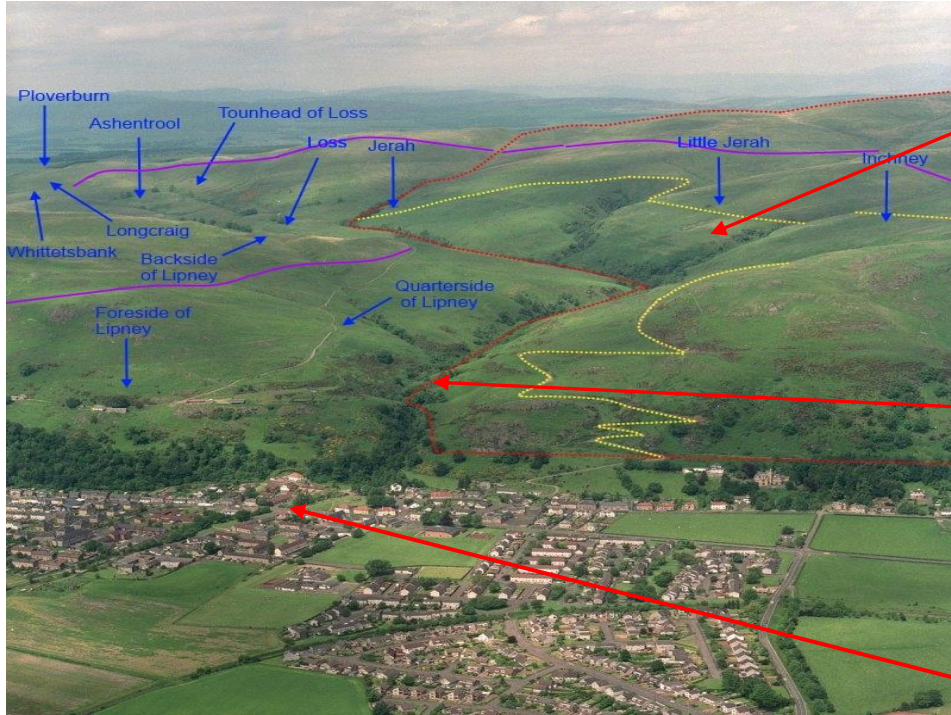
Andrew Vaughan

District Manager, Tilhill Forestry

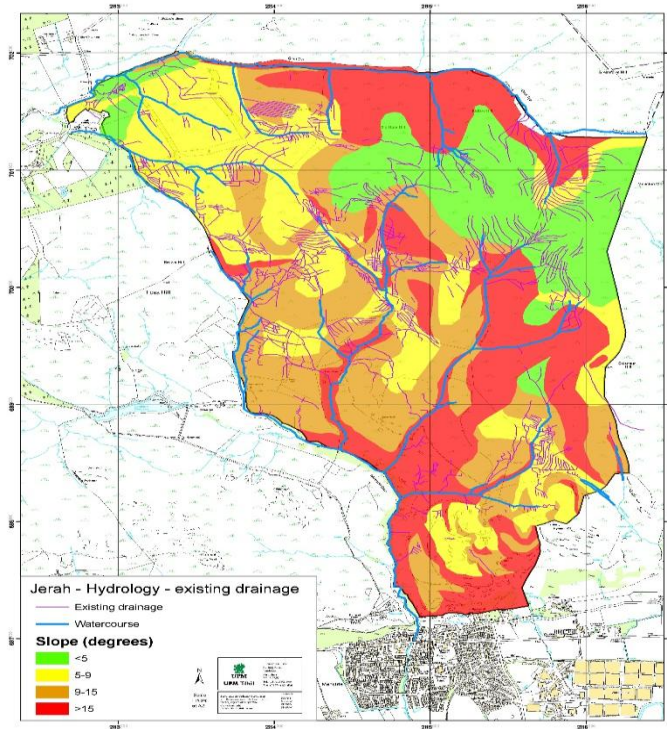
Jerah Woodland – location, area



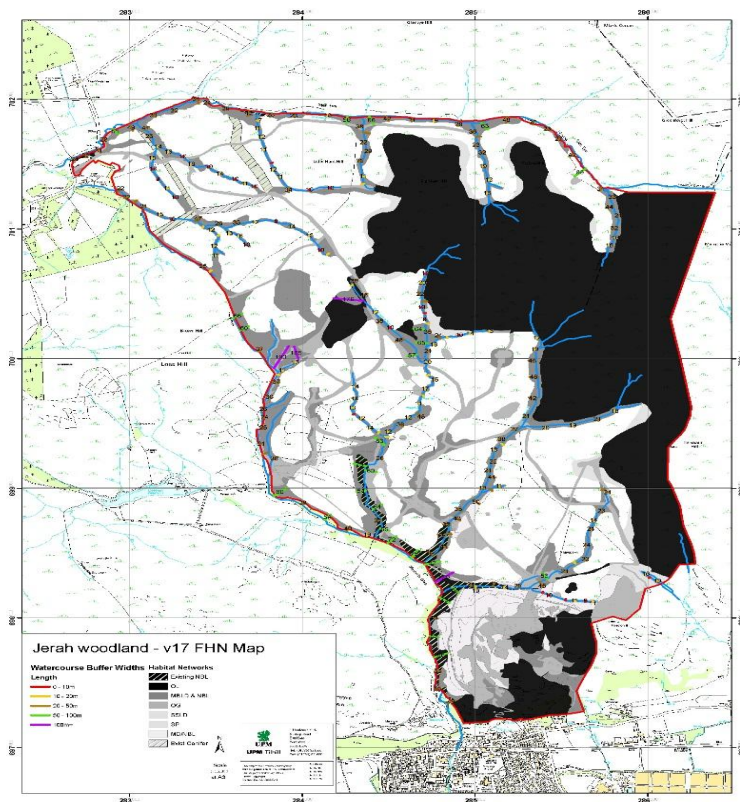
Jerah Woodland – site constraints



Jerah Woodland – hydrology, soils



Jerah Woodland – habitat networks



Jerah Woodland – Summary

- 1.3M trees x 16 species x 583ha, integrated by landform into landscape
- 2 x PhD's – archaeology (cultural heritage) & hydrology (run-off and woody debris)
- Reduced flood risk – maintain quality, reduce extremes of quantity
- High public access and amenity
- Integrated Forest Habitat Networks (riparian corridors and native species)
- 183k tCO₂e per rotation = 7.2 tCO₂e/ha/yr (vs 7t CO₂e/yr average household emissions)
- Relevant Tools - Ecological Site Classification, SG Land Use and Forest Strategy, UK Forest Standards